

University of South Alabama

**JagWorks@USA**

---

Synapse Newsletter

Charles M. Baugh Biomedical Library

---

1993

## Synapse

Alabama Health Libraries Association

Follow this and additional works at: <https://jagworks.southalabama.edu/alhela-synapse>



Part of the [Medicine and Health Sciences Commons](#)

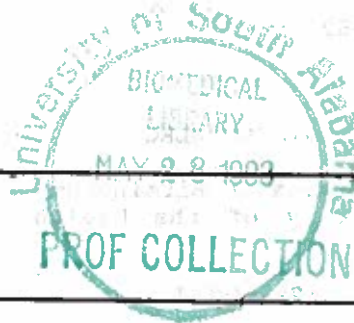
---



# Synapse

Alabama Health Libraries Association, Inc.

Vol. 13, Issue 1



Spring 1993

## PRESIDENT'S COLUMN

by Joy Harriman

Welcome to Spring! And welcome to a new year for ALHeLA! 1993 began and has continued to move in one word: FAST.

Already the Executive Committee has met in Montgomery. The list of committee members is elsewhere in this newsletter. Please keep the names handy and remember who is working in what areas. During the next year they will call on you for input or assistance and during the year they will expect you to call with ideas or offers of assistance. This year ALHeLA has the largest Executive Committee yet. We fully expect as many members as possible to become involved in ALHeLA activities.

Please mark your calendars:  
• ALHeLA Annual Meeting  
• Mid Southern Chapter/MLA



will share meeting space in Birmingham, AL, Saturday October 9 - Tuesday October 12, 1993. We are excited to be a part of this larger group and still be strong enough to retain our presence at the meeting.

During the next Executive Committee meeting (Greenville, AL, April 30, 10:00 a.m.) proposals for ALHeLA's contribution to the regional meeting will be discussed and decided. Thus far, ideas range from sponsoring a CE (copyright, internet, access vs. ownership, and legal resources) to sponsoring a luncheon with a guest speaker from NLM. The Committee welcomes your thoughts on these proposals...we are all in this together. If you have an opinion, express yourself!

Lisa R. Russell, our steadfast accountant, has made the announcement she will retire from that position at the end of this term. She has worked as our bookkeeper for the last 4 years. She will not be retiring from her position on the Board of Directors. Please help me in thanking Lisa for always being there for us...from President, to chief coordinator of the Incorporation, to Accountant, to spokesman for the Alabama librarians, we are grateful. It will be almost impossible to locate a replacement who has such vast experience and professionalism, a even-keeled good nature, and wit to withstand the "slings and arrows" of outrageous librarians. Thank you.

If anyone has questions or comments, please call me at (205) 431-2134. I welcome your thoughts on any topics.

(Executive Committee listed on next page.)

1993 ALHeLA Executive Committee Members

PRESIDENT

Joy H. Harriman  
Director, Medical Library  
Mobile Infirmary Medical Center  
P.O. Box 2144  
Mobile, AL 36652  
(205)431-2134  
FAX (205)431-2529

VICE-PRESIDENT/PRESIDENT-ELECT

Sondra Pfeiffer  
University of Alabama at Birmingham  
Lister Hill Library of the Health  
Sciences  
UAB Station  
Birmingham, AL 35294-0013  
(205)934-2230  
FAX (205)934-3545

SECRETARY

Tamara Lee  
Head, Veterinary Medical Library  
Auburn University  
James E. Greene Hall, Rm. 101  
Auburn University, AL 36849-5606  
(205)844-1750  
INTERNET: LeeTam@AU.DUC.ADM

TREASURER

Lisa R. Russell  
Chief Medical Librarian  
University of Alabama  
Health Sciences Library  
P.O. Box 870378  
Tuscaloosa, AL 35487-0378  
(205)348-1360  
FAX (205)348-9563  
EMAIL: LRUSSELL@UA1VM.UA.EDU

MEMBER-AT-LARGE

Kathleen V. Fetters  
Bryce Hospital  
Staff Library  
200 University Boulevard  
Tuscaloosa, AL 35401  
(205)759-0736  
FAX (205)759-0890

MEMBER-AT-LARGE

Judy Burnham  
U.S.A. Medical Center  
Medical Center Library  
Mastin Building  
2451 Fillingim St.  
Mobile, AL 36617  
(205)471-7855  
(FAX) (205)471-7857  
INTERNET: USAJFB01@asausa.asn.net

MEMBER-AT-LARGE

Mary Fran Prottzman  
Lyster US Army Hospital

Medical Library

Bldg. 301  
Fort Rucker, AL 36362  
(205)255-7350  
FAX (205)255-7990  
INTERNET: RUCKLIB@FTRUC-  
AMEDD.MIL.GOV

BYLAWS/HANDBOOK COMMITTEE

George Marangoly  
Chief, Library Service  
Veterans Administration Medical  
Center  
215 Perry Hill Road  
Montgomery, AL 36109-3798  
(205)272-4670 x4977  
FAX (205)260-4125

JOINT ANNUAL MEETING COORDINATOR

Nancy W. Clemmons  
Acting Director  
UAB Lister Hill Library of the Health  
Sciences  
UAB Station  
Birmingham, AL 35294-0013  
(205)934-5460  
FAX (205) 934-3545

CONTINUING EDUCATION COMMITTEE (Co-Chaired)

A.J. Wright  
Department of Anesthesia Library  
University of Alabama at Birmingham  
619 19th St. South  
Birmingham, AL 35233-6810  
INTERNET: MEDS002@UABDPO.DPO.UAB.EDU  
BITNET: MEDS002@UABDPO

Jack Smith

Lister Hill Library of the Health  
Sciences  
UAB Station  
Birmingham, AL 35294-0013  
(205)934-2230

DIRECTORY COMMITTEE

Mike Perry  
USAMC Medical Center Library  
Mastin Building  
2451 Fillingim St.  
Mobile, AL 36617  
(205)471-7855  
FAX (205)460-7638

EXCHANGE COMMITTEE

(Co-Chaired)  
Paula Davis  
Baptist Memorial Hospital  
Medical Library  
1007 Goodyear Ave.  
Gadsden, AL 35999  
(205)494-4128

FAX (205)494-4498

Lee McCann  
University of Alabama in Huntsville  
School of Primary Medical Care  
Clinical Sciences Center  
109 Governor's Dr., SW  
Huntsville, AL 35801  
(205)551-4405  
FAX (205)534-9664

**LIASON COMMITTEE**

Martha Tillotson  
University of Alabama  
Health Sciences Library  
P.O. Box 870378  
Tuscaloosa, AL 35487-0378  
(205)348-1366  
FAX (205)348-9563  
E-MAIL: MTILLOTS@UA1VM.UA.EDU

**MEMBERSHIP COMMITTEE**

(Co-Chaired)  
Pat McGee  
Librarian  
Southeast Alabama Medical Center  
P.O. Drawer 6987  
Dothan, AL 36302  
(205)793-8102  
FAX (205)793-8157

Mary Frann Prottzman  
Lyster US Army Hospital  
Medical Library  
Bldg. 301  
Fort Rucker, AL 36362  
(205)255-7350  
FAX (205)255-7990

**SYNAPSE EDITOR**

Beth Laughlin  
Montclair Baptist Medical Center  
Medical Library  
800 Montclair Road  
Birmingham, AL 35213  
(205)592-5640  
FAX (205)592-5269

**ASSISTANT EDITOR, SYNAPSE**

Jie Li  
USAMC  
Medical Center Library  
Mastin Building  
2451 Fillingim St.  
Mobile, AL 36617  
(205)471-7855  
FAX (205)460-7638

**UNION LIST COORDINATOR**

(Co-Chaired)  
Robert Avant  
AULS Librarian  
Alabama Public Library Service  
6030 Monticello Drive

Montgomery, AL 36130  
(205)277-7330  
1-800-392-5671

Diane Williams  
University of South Alabama  
Biomedical Library  
Room 312, Library Building  
Mobile, AL 36617  
(205)471-7855  
FAX (205)460-7638

**PAST PRESIDENT**

Barbara Doughty  
Medical Reference Librarian  
University of Alabama  
Health Sciences Library  
P.O. Box 870378  
Tuscaloosa, AL 35487-0378  
(205)348-1364  
FAX (205)348-9563  
E-MAIL: BPDOUGHT@UA1VM.UA.EDU

---

# ALHeLA EXECUTIVE COMMITTEE MINUTES

---

The ALHeLA Executive Committee met on Friday, January 29, 1993, in Montgomery at the Alabama Public Service. Joy Harriman, President, called the meeting to order at 10:30 a.m.

Tamera Lee informed the committee of a revision in the minutes of the 1992 annual meeting, specifically regarding the days for the 1993 ALHeLA and Southern Chapter of MLA joint meeting. The conference will be held October 9-12, with continuing education offering on Saturday, the 9th and Tuesday the 12th. The minutes of the 1992 business meeting were accepted.

Lisa Russell gave the Treasurer's Report and noted a sound standing. Ms. Russell notified the group of the need to seek a new treasurer as she was currently serving her 4th year to end 2 2-year terms. Ms. Russell also acknowledged that ALHeLA will have a final ruling on the association's non-profit status in January 1994 (association now well within the range of not exceeding a profit of \$25,000 with a balance of \$3839.98.)

In reporting old business, Judy Burnham stated that one membership directory had been sold as a result of conference advertisement. Barbara Doughty noted that the association has 10 new personal members and 7 new institutional members.

Ms. Harriman opened the floor for new business. Barbara Doughty informed the committee that she, Lisa Russell, and Beth Laughlin have been working on a Grateful Med exhibit to be displayed at the meeting of the Alabama Hospital Association, June 9-11, 1993, Birmingham, AL, and the Alabama Pharmaceutical Association, June 25-29, 1993, Panama City FL. Ms.

Doughty acknowledged that more detail was needed for the budget. The Executive Committee decided to officially establish an ad hoc committee for special projects to include Ms. Doughty, Ms. Russell, and Ms. Laughlin. Ms. Harriman lead a discussion regarding the possibility of having a sign made with the ALHeLA logo on it for conference and exhibit purposes.

Robert Avant, Union List Coordinator, informed the Board of a new Union List development which resulted from SOLINET's/OCLC's decision to assign the responsibility for ordering offline group subsets (such as the tape for ALHeLA) to the group ordering the subset rather than to the union listing agent. Mr. Avant alerted the committee that APLS is no longer the agent for processing of orders for the Union List. Now groups should order offline subsets directly from OCLC. For the most recent product, USA assumed product liability for the tape extract, with Pat Rodgers as contact person. Mr. Avant stated that any library which has had a 3-character symbol assigned to it by OCLC can assume responsibility for ordering offline products, i.e. the library does not have to be an OCLC library or a member of SOLINET. Mr. Avant expressed concern for shifting responsibility of designated institutions year after year; he recommended that one designated entity be permanently assigned the responsibility to avoid the confusion and extra work involved in a rotation of ordering libraries. Mr. Avant further stated that he and Diane Williams would continue to explore options. Judy Burnham volunteered to ask staff at USA about continuing to serve as the ordering institution. Mr. Avant pledged to continue to provide guidance in the completion of product order forms and to supply

---

## MINUTES--CONTINUED

---

statistics and other information for determining the amount of charge to institutions for their share of the tape cost.

Ms. Harriman welcomed new committee chair persons. Sondra Pfeiffer, Vice President/President Elect, gave an annual meeting report and distributed a handout of proposed agenda. Ms. Pfeiffer acknowledged that the Southern Chapter of MLA and ALHeLA last met jointly in 1983. For that particular conference, ALHeLA held a breakfast meeting. Ms. Pfeiffer asserted two possibilities for an ALHeLA meeting at the 1993 joint conference: October 10, Sunday lunch, 12:00 - 1:30 and October 11, Monday breakfast 7:30 - 9:00. The committee discussed possibilities for ALHeLA participation in the conference. Ideas mentioned included: bringing in a speaker, sponsoring or co-sponsoring a break and offering a CE program or academic course.

Ms. Pfeiffer stated that she thought the theme of the conference might be "stars Fell on Alabama". Suggested topics of interest included: copyright, Internet, access vs. ownership, legal resources, and Alabama Angels.

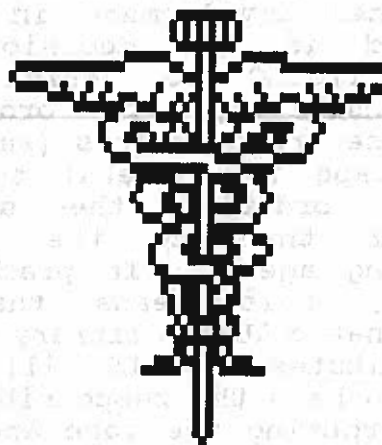
Mary Fran Prottzman, Chair of the Membership Committee, shared her ideas regarding an outreach effort to broaden and diversify the scope of ALHeLA's membership. Ms. Prottzman expressed interest in taking a "personal" approach to recruit and encourage fellow librarians. She distributed a handout for possible inclusion in Synapse entitled "Each One Reach One."

Beth Laughlin, editor of Synapse, announced the next newsletter deadline of March 15. George Marangoly suggested that interlibrary loan telephone numbers

be listed in the ALHeLA directory. Jay Harris announced that Lister Hill had dropped having BRS MEDLINE on the mainframe and had added CD-PLUSNET, including MEDLINE, as well as numerous other databases.

The meeting adjourned at 12:30 p.m.

Submitted by Tamera Lee



SYNAPSE (ISBN 0892-5283) is the official publication of the Alabama Health Libraries Association, Inc. (ALHeLA). Published 3 times a year. Edited by: Beth Laughlin, Montclair BMC Library, 800 Montclair Rd., Birmingham, AL 35213. Phone: (205)592-5640, FAX (205)592-5269. Deadline for next issue (Summer 1993) is July 16, 1993.

## UNION LIST UPDATE

by

Robert Avant, AULS Librarian

One of the strongest components of the Alabama Union List of Serials (AULS) is the data which we enter from our medical library contributors. Contributions from ALHeLA members provide the union list with highly specialized and often unique titles to which our users would not otherwise have access. In addition, their contributions allow AULS to be an indirect link in the routing of ALHeLA's holdings to NLM for loading into DOCLINE. One new development in this regard is the decision by SOLINET/OCLC to assign the responsibility for ordering offline group subsets (such as the tape for ALHeLA) to the group ordering the subset rather than to the union listing agent. In practical terms, this means that a designated ALHeLA library which contributes to AULS will from now on have the responsibility for ordering the tape and for assuming the financial liability until it can be reimbursed by ALHeLA. I am now a member of ALHeLA, and Diane Williams and I are ALHeLA Union List Coordinators this year.

AULS is an OCLC-generated product. One problem regarding the use of a tape extract from AULS is that not all OCLC serial records contain SERLINE numbers. Pat Rodgers of the University of South Alabama Biomedical Library is presently giving me SERLINE numbers along with her updates. We in turn are checking OCLC to make sure these numbers are present in the bib record and supplying them to OCLC Quality Control

when they are not. The turnaround time for getting these numbers added has so far been very good. Pat is now a member of the AULS Advisory Committee, replacing Maureen Battistella.

Friends of former AULS Librarian Cathy Clayton Kellum will be interested to know that she now works at Redstone Arsenal Scientific Information on contract with Tec-Masters. She has been active in union listing at the national level through NASIG (North American Serials Interest Group) and the Union Listing Subcommittee of ALCTS.

The updates submitted by ALHeLA members have tended to adhere closely to the guidelines for reporting holdings. Readers of Synapse are reminded that the key elements in reporting are volumes, years, formats, and retention policies (e.g. "Current issues retained until microfiche received"). Contributors are required to submit updates at least biennially.

Please call me at APLS (1-800-392-5671, ext. 275) if I can answer any questions regarding AULS. We appreciate your participation!

PLEASE SEE THE UNION LIST TIME LINE ON THE FOLLOWING PAGE!

## UNION LIST TIME LINE

During our last Executive Committee meeting, the lack of knowledge regarding the lineage and development of our Union List was strongly noted. With the exception of Robert Avant, APLS, and Maureen Battistella, now located in Nebraska (home) and South Dakota (work), NO ONE understood the impact of Union List and all the connections our simple Union List presented to ALHeLA. In an effort to clarify its origins, we have prepared the timetable below. Should you feel confident to add or delete, please do so as soon as possible.

1991

During the fall, the Union List coordinators of ALHeLA (Maureen Battistella and Pat Rodgers, USA, Mobile) worked with APLS who contracted with OCLC to pull the holdings tape of only those who wanted their holdings reported to SERHOLD.

APLS contracted with OCLC from 1989-91 to have the tape pulled.

The tape was given to our regional representatives, NN/LM in Baltimore, who then sent it to NLM for entry into the SERHOLD list (DOCLINE).

APLS uses OCLC as a data base: our three digit holdings are on record, as well as the detailed holdings in the Union List subsystem of OCLC. APLS does the data entry into OCLC for the AULS.

1992

APLS withdrew contracting services in July.

A policy change was made indicating that groups or subsets will assume responsibility for placing subset orders thereby contracting directly with OCLC.

During the fall, the coordinators of ALHeLA (Maureen Battistella and Pat Rodgers) contracted (with the University of South Alabama as the contracting agent) with OCLC to pull the tape. They ordered a group product, and it was sent to Baltimore. No copy of the tape was sent to APLS.

When individual medical libraries send union list holdings to Robert Avant at APLS, he inputs them into OCLC. The rule to stay in AULS is that your holdings have to be updated at a minimum of every two years. This basic requirement also applies to NLM keeping us in the SERHOLD: it has to be updated at a minimum of every two years.

1993

This year should develop the same as last year, except Diane Williams will contract through USA with OCLC to get the tape, send it to the region, and bill ALHeLA.

**RULE TO REMEMBER:** AULS says you must update once every two years or you are dropped out. NLM says the same thing.



## NEWS FROM NN/LM

A new logo will soon appear on all National Network of Libraries of Medicine (NN/LM) publicity materials, stationery items and regional exhibits. This logo was developed to reflect the national nature of the Network and will be used in all eight states.

There are now 757 NN/LM members in the Southeastern/Atlantaic Region. If you haven't received any mailings from NN/LM recently, you may have been dropped! Check on your membership status by calling 800-338-7657.

Grateful Med 2.0 for the MacIntosh will be available this summer. Enhancements will include Loansome Doc and expanded MeSH display.

As part of the outreach goals of the RML contract with the National Library of Medicine, the RML supports Grateful Med training throughout the region. RML staff have conducted many demonstrations of the software and are now seeking individuals who are interested in conducting training for health professionals and librarians in their locale. NLM has provided a Grateful Med training kit which includes both an instructor and a student manual, NLM fact sheets and promotional items that can be used to advertise Grateful Med classes. If you are interested in becoming a Grateful Med trainer, please contact Lisa LoVullo at 1-800-338-7657.

The 1992 edition of the ILL Policy Handbook for the Southeastern/Atlantic Region is

now available. Accompanied by the region's Union List of Serials on Microfiche, the cost is \$25.00. If you wish to order the handbook and microfiche, send a check payable to UMAB HSL to:

Evelyn Peyton  
NN/LM, SE/A Region  
UMAB HSL  
111 South Greene St.  
Baltimore, MD 21201-1583

Please include your phone number with the order.

Public and private non-profit health sciences organizations in the Southeastern/Atlantic Region of the NN/LM are encouraged to submit proposals for INTERNET grants. Through an interagency agreement with the National Science Foundation, NLM will award 10-12 basic INTERNET connection grants and 1-2 multi-campus network demonstration grants. Deadline for proposals is June 15. For more information, call 1-800-358-7657.

# EACH ONE REACH ONE!

We would appreciate your assistance in expanding the membership of ALHeLA by extending a personal invitation to fellow librarians in your community to join ALHeLA. A personal invitation can be much more effective than mass mailing of membership brochures from an organization.

Please consider the librarians within your community with who you work & deliver the enclosed brochure to either a health science librarian who has not yet joined ALHeLA or a librarian of another genre: public, school, academic, or special. Not only will this strengthen our organization through new ideas & support, but it should also strengthen your own ties within your individual community. Brochures can be delivered personally or mailed with a personal note.

## ADVANTAGES OF ALHeLA MEMBERSHIP INCLUDE:

\*Economical CEU's

\*Information concerning the foremost developments in the provision of health information

\*Identification of health libraries

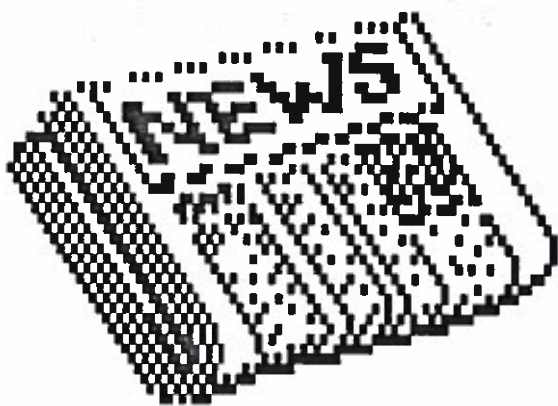
\*Enhanced library networking, including access to SERHOLD and DOCLINE

Thank you for your assistance. Additional membership brochures can be obtained from your current ALHeLA membership Committee Co-Chairs:

Mary Fran Protsman, Lyster Army  
Community Hospital, (205)255-7350

or

Pat McGee, Southeast Alabama Medical  
Center, (205)793-8102.



# NEWS YOU CAN USE!

## FDA BBS

submitted by Mary Fran Prottzman

Some of the most difficult questions that I receive are a result of a "medical news announcement" on CNN or in USA TODAY. One source that I have found useful in filling these requests is the FDA BBS. The information it provides is appropriate for most health care consumers as well as providers, it's free in every sense of the word & registration is simple and available to anyone with a pc & a modem.

The NEWS section reports drug recalls, alerts & approval as soon as they are issued by FDA. Recent entries include:

TAXOL APPROVED FOR OVARIAN CANCER  
SUMATRIPTAN APPROVED FOR MIGRAINES  
ALERT OF HISMANAL

The CONSUMER section is an electronic version of the FDA CONSUMER. Recent articles include:

PATIENT RESTRAINTS  
NEW TREATMENT FOR KAWASKI  
LATEX ALLERGIES  
NEW PERTUSSIS VACCINE

I distribute the NEWS items (alerts, recall, etc.) to our health care providers via our hospital LAN as they are issued. I search the CONSUMER portion when I need to provide consumer health information,

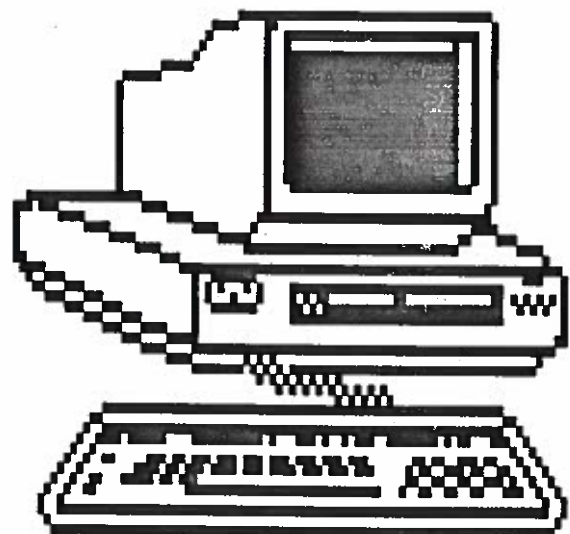
download the information to my word processor software & print within minutes.

The commands are simple: SCAN lists the most recent entries, SEARCH allows you to search by keyword, & READ displays each item.

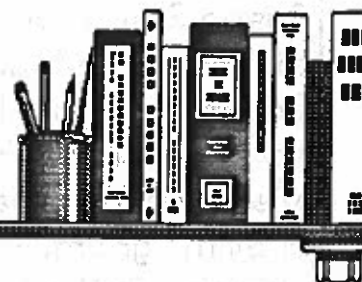
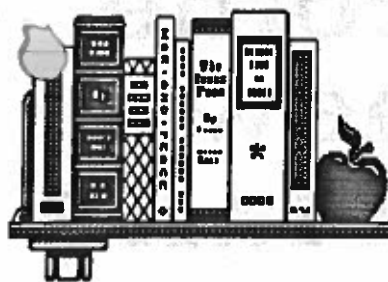
FDA BBS: 800-222-0185  
Settings: 2400 E-7-1

Initial logon consists of providing your name and password. Instructions for use can be downloaded.

If you are aware of similar BBS's, please call Mary Fran at (205)255-7350.



# Library News from ALHeLA Members



## FROM USA:

The campus site of the University of South Alabama moved into a three story building adjacent to USA College of Medicine on Dec. 21. The Biomedical Library Building represents a 325% increase in overall space and a 471% increase in user seating capacity over the old site. Located in the library are eight individual study rooms, eight group study rooms, a conference room, and the College of Medicine's microcomputer lab. Prior to moving the Biomedical Library was located in the University Library building. Now in its own building, the Biomedical Library campus site is able to maintain regular hours during quarter breaks. Because of the heavy use of MEDLINE and CINAHL on CD-ROM, the Biomedical Library is going to set up an additional CD-ROM workstation, bringing the total to four. In the computer lab, there are 15 workstations, in which softwares of computerized test books on medicine, self-testing, and visual learning aids, etc. are installed.

The Biomedical Library of the University of South Alabama celebrated National Library Week during the week of April 18-24. Three displays were posted at the College of Medicine, College of Nursing and College of Allied Health Professionals. On the displays were short paragraphs on the theme "Libraries Change Lives" from the deans of the three colleges, Mission Statement of the library as well as library services. Workshops on MEDLINE, CINAHL, GRATEFUL MED, Science Citation Index and other printed indexes were scheduled at both the campus

and Medical Center sites of the Biomedical Library during the week. Contests of crossword puzzles related to the libraries, matching physicians with their characteristics and guessing the weight of the 1990 Cumulated Index Medicus were also held at both sites of the Biomedical Library.

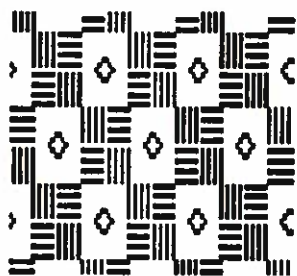
## FROM LISTER HILL LIBRARY, UAB:

During March, Lister Hill Library changed to a new networked database service called LinkPLUS, featuring MEDLINE from CD Plus. Users will be able to search from home, office or lab as well as in the library. LinkPLUS offers the full MEDLINE files as well as CINAHL, Dissertation Abstracts, FREIDA, HAPI (Health and Psychosocial Instruments) HEALTH, MDX Health Digest, PAIS, SPORT Discus, as well as the Federal Register and grant databases.

## FROM MONTCLAIR BMC LIBRARY:

The library recently acquired a new 486 IBM computer for use of CORE MEDLINE CD-ROM. A new addition to the public terminal is QMR (Quick Medical Reference), a diagnostic software program. QMR allows the physician to view the complete differential diagnosis for over 4,300 findings, symptoms, signs and lab values or to combine multiple disease features to reach a diagnosis. QMR can also create fictional patients to test the user's diagnostic skills.

Susan Seay, formerly librarian at Hamilton Medical Center in Dalton, Georgia, is now the librarian at the American Sports Medicine Institute (HealthSouth) in Birmingham. Susan is enjoying setting up a brand new library!



Kay Hogan is the new librarian at Princeton Baptist Medical Center. Kay previously worked at Pelham Public Library and Birmingham Public Library in Government Documents. She is busy learning how a hospital library operates and about Grateful Med. She is attending MLA in Chicago and plans to receive MEDLINE training soon.

# Welcome to new librarians

Pam Pate is working part-time in Information Services at Lister Hill Library, UAB. Pam worked at the Ida Moffet School of Nursing and the V.A. Medical Center Library in Birmingham before taking off several years to take care of four little boys! Pam is enjoying seeing how libraries have changed since the early 80's (no more searching on an old Texas Instruments Silent 700!)

Martha Verchot is back at Lister Hill Library in Information Services. She worked as Cataloging Librarian at Lister Hill before moving to Normal, IL to work in the library at Illinois State University. Welcome back, Martha!

